

1



- Empty content of dry foam powder into a 4 qt mixing bowl.
- Add 1/3 cup of room temperature water.
- Use an electric mixer with egg beaters or a whisk attachment until product foams and holds stiff peak shape [approximately 3 minutes on high with electric mixer].

2



- Place foam onto parchment paper or a cookie sheet tray.
 - Spread foam 1" thick creating your swirling creative work area.
 - Open liquid dyes and slowly drizzle color around the foam while continuing to create an abstract of color.
 - Use a toothpick to swirl color around foam.
- TIP:** For best results, do not overmix colors.

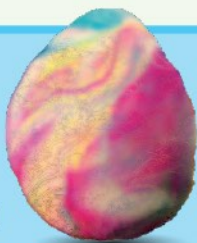
3



- Place plastic gloves on hands.
 - Dip eggs into foam covering the egg.
- TIP:** Use a dipping and swiping motion to cover each side of the egg. Do not roll.

4

- Place foam covered egg onto parchment paper to color for 5 min. Additional time = deeper color.



5
MIN



- Wash eggs off with cool water to remove foam.



CAUTION: Choking hazard. May contain small parts. Not for children under 3 years of age.
CAUTION: Product may stain some surfaces. Use soap and water to aid in clean up.

PAAS® Food Color Dyes Contain: Water, maltodextrin, FD&C Yellow #5, FD&C Red #3, FD&C Blue #1, FD&C Red #40, methylparaben, potassium sorbate (preservative).

Whip Powder Ingredients: Sugar, enzyme modified soy protein.

CONTAINS: SOY

Conforms to ASTM D-4236.

Food safe dyes are made in U.S.A. All other components are made and packaged in Shan Wei, China.

PAAS®, Designs and Characters are trademarks or registered trademarks of Signature Brands, LLC.

©2020 Signature Brands, LLC.

Distributed by Signature Brands, LLC.

Ocala, FL 34474 • 1-877-726-8793

DYES

